

User Manual



HD-A6L

CONTENT

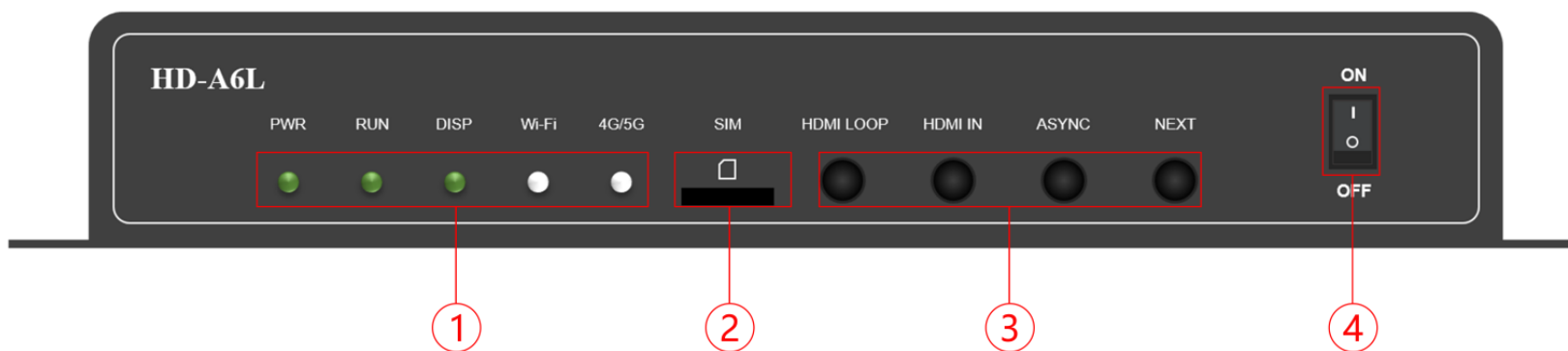
Chapter 1 Interface connection.....	3
Chapter 2 HDPlayer installation	10
Chapter 3 HD-A6L Parameter settings.....	12
3.1 Connection.....	12
3.2 Basic Setting	12
3.3 More setting.....	17
3.3.1 Device information.....	17
3.3.2 WiFi setting	19
3.3.3 Volume setting	20
3.3.4 Brightness setting.....	21
3.3.5 Time correction	25

3.3.6 Switch machines setting	27
3.3.7 Relay setting	28
3.3.8 Network setting	29
3.3.9 Device lock setting.....	30
3.3.10 Wireless Display	31
Chaper 4 Async Program Editing and Publishing	31

Chapter 1 Interface connection

1.1 HD-A6L Appearance and interface

Front panel:

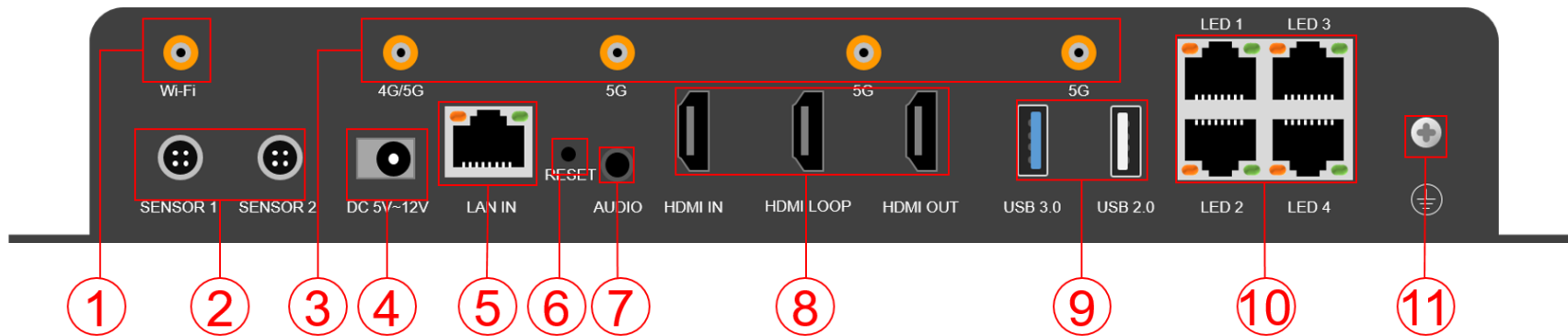


Serial number	Name	Description

1	Working light	<p>PWR: Power indicator light, the green light is always on, and the power input is normal</p> <p>RUN: System running light, the green light is flashing, the operating system is running normally; the green light is always on or off, the system is running abnormally</p> <p>DISP: Display indicator, green light flashes, the FPGA system is running normally; the green light is always on or off and the system is running abnormally</p> <p>Wi-Fi: Wireless indicator light, in AP mode, the green light is blinking; in STA mode, the green light is always on. The red light is blinking, the Wi-Fi is abnormal, and the light is off; the Wi-Fi bridge cannot connect to the server, and the yellow light is always on</p> <p>4G/5G: Communication network indicator, green light is always on, the connection to the cloud server is successful; yellow light is always on, the cloud service cannot be connected; red light is always on, there is no signal or the SIM is in arrears or cannot dial; the red light is blinking, the SIM cannot be detected; No light, no module detected</p>
2	SIM card slot	Nano SIM card slot, providing 4G/5G networking for remote control (optional 4G/5G)

		module)
3	Function button	<p>HDMI LOOP: HDMI stitching mode</p> <p>HDMI IN: HDMI signal input, synchronous playback</p> <p>ASYNC: Asynchronous mode switching</p> <p>NEXT: Switch program play</p>
4	Switch	Control the power of the player box, ON means power on and OFF means power off

Rear panel:

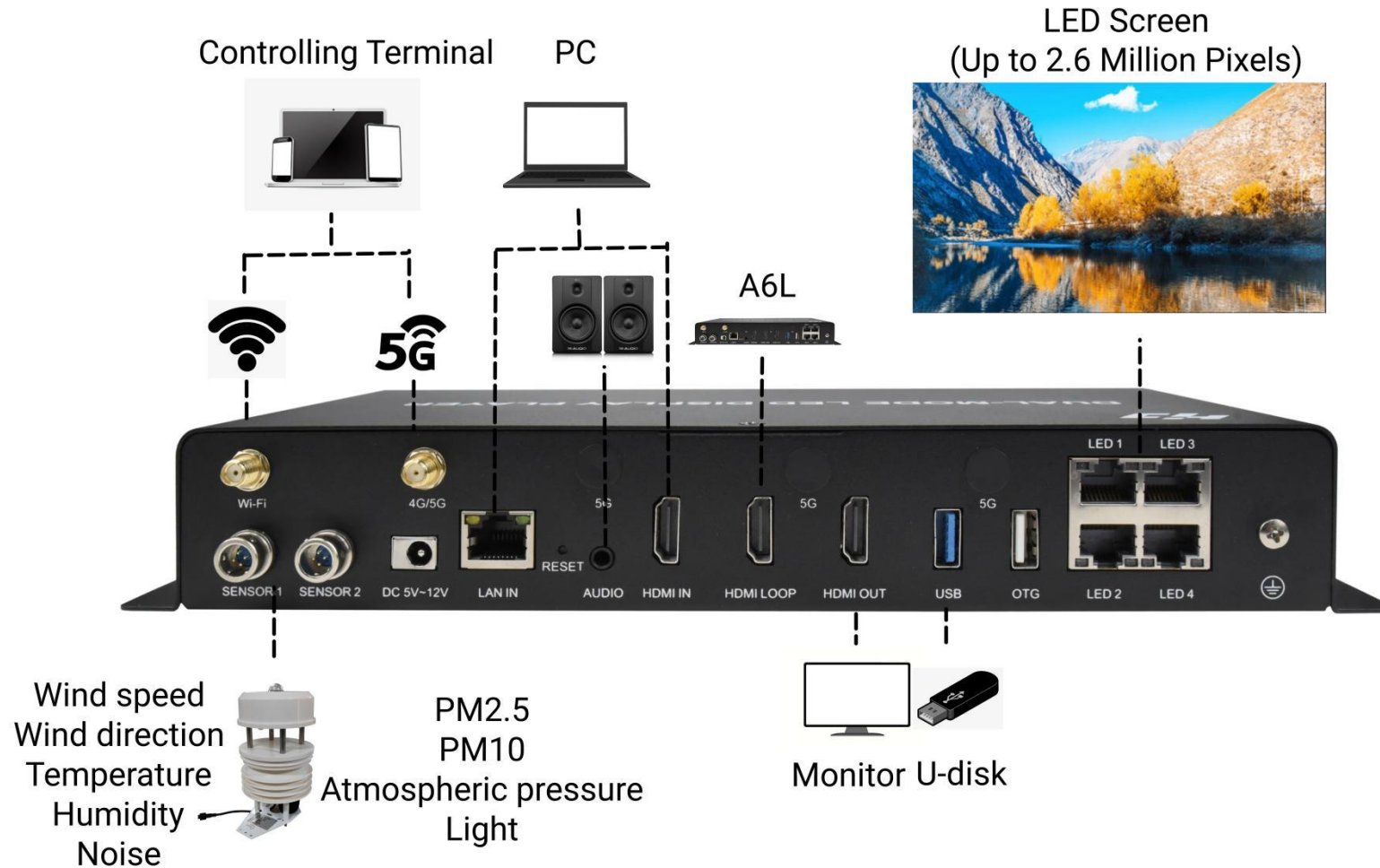


Serial number	Name	Description
1	Wi-Fi antenna	Connect Wi-Fi antenna to enhance wireless signal
2	Sensor	External temperature, humidity, brightness, wind speed, wind direction, noise, PM2.5,

		PM10, CO ₂ and other sensors
3	4G/5G antenna	Connect 4G/5G antenna (4G with 1 antenna, 5G with 4 antennas, optional)
4	Power supply	5V 3A ,12V 1.5A
5	Input network port	Gigabit input network port, connect to computer to debug and release programs, can be used to access LAN or Internet
6	Reset	Reset pinhole
7	Audio output	TRS 3.5mm standard two-channel audio output port
8	HDMI	<p>HDMI IN: HDMI1.4 synchronous signal input interface, support adaptive scaling</p> <p>HDMI LOOP: HDMI1.4 synchronous signal input or splicing input interface</p> <p>HDMI OUT: HDMI1.4 output interface</p>
9	USB	<p>USB: USB3.0 for updating programs, inserting programs or expanding capacity</p> <p>OTG: Used for debugging or upgrading firmware (default U disk function, factory configurable)</p>

10	Output network port	Gigabit output network port, cascaded with HD-R series receiving card
11	Ground wire	Ground wire connection port

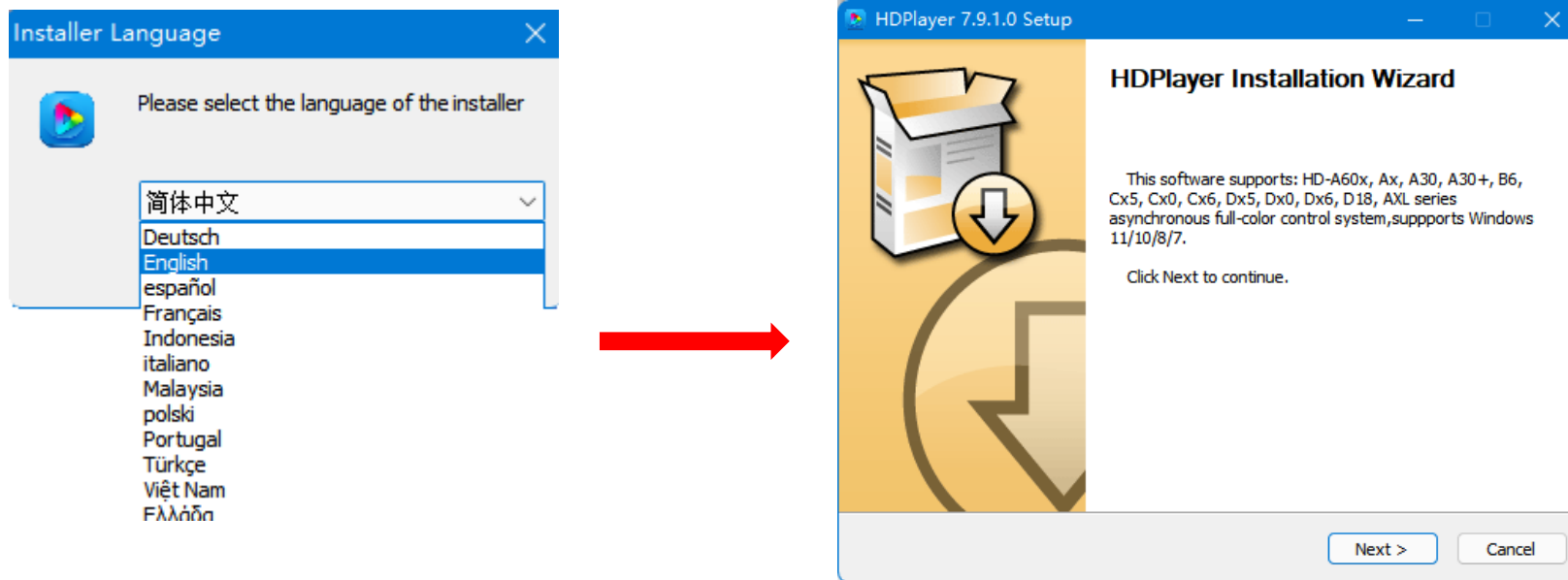
1.2 Hardware connection



Chapter 2 HDPlayer installation

Please download the installation package of HDPlayer software from Huidu's official website www.huidu.cn, and complete the installation according to the diagrams below:

1.Run the software package,then select language for installer. Click [OK] to go on.

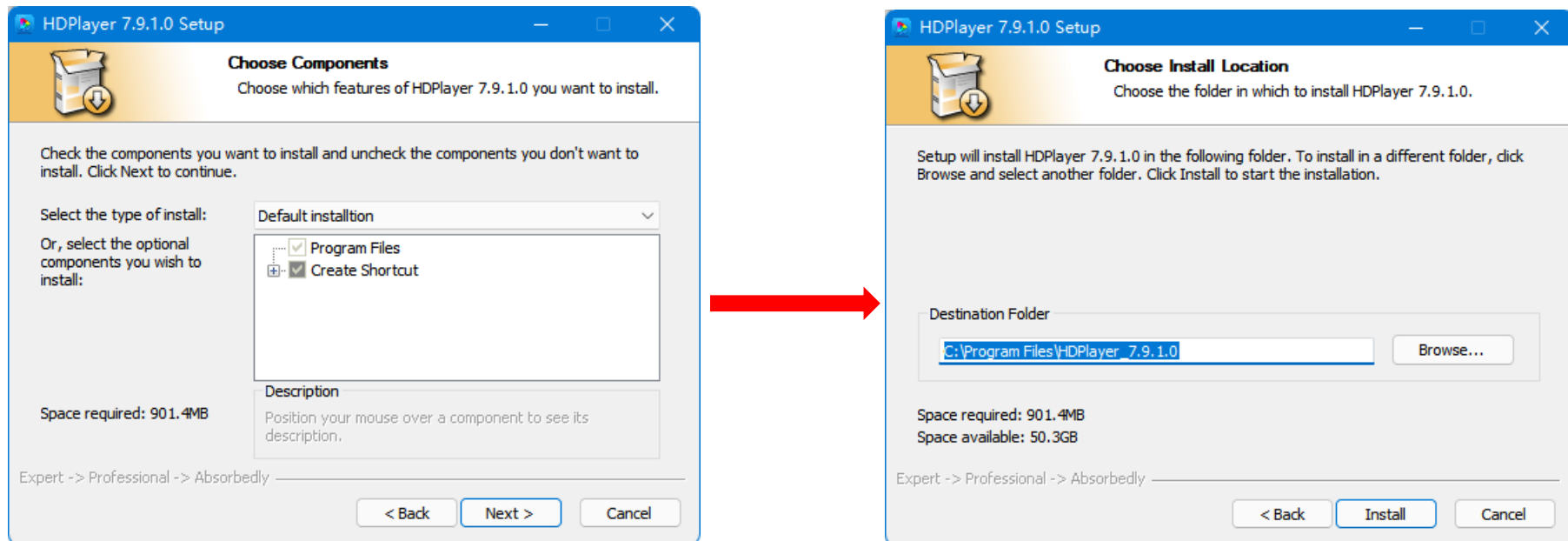


2. After selecting a language, an installation wizard like below will appear. Click [Next].

Choose components, default installation.

Choose the installation location, click [Browse] to change the default target location, then click [Install] after completing;

After the installation is complete, you are ready to use HDPlayer.



Chapter 3 HD-A6L Parameter settings

3.1 Connection

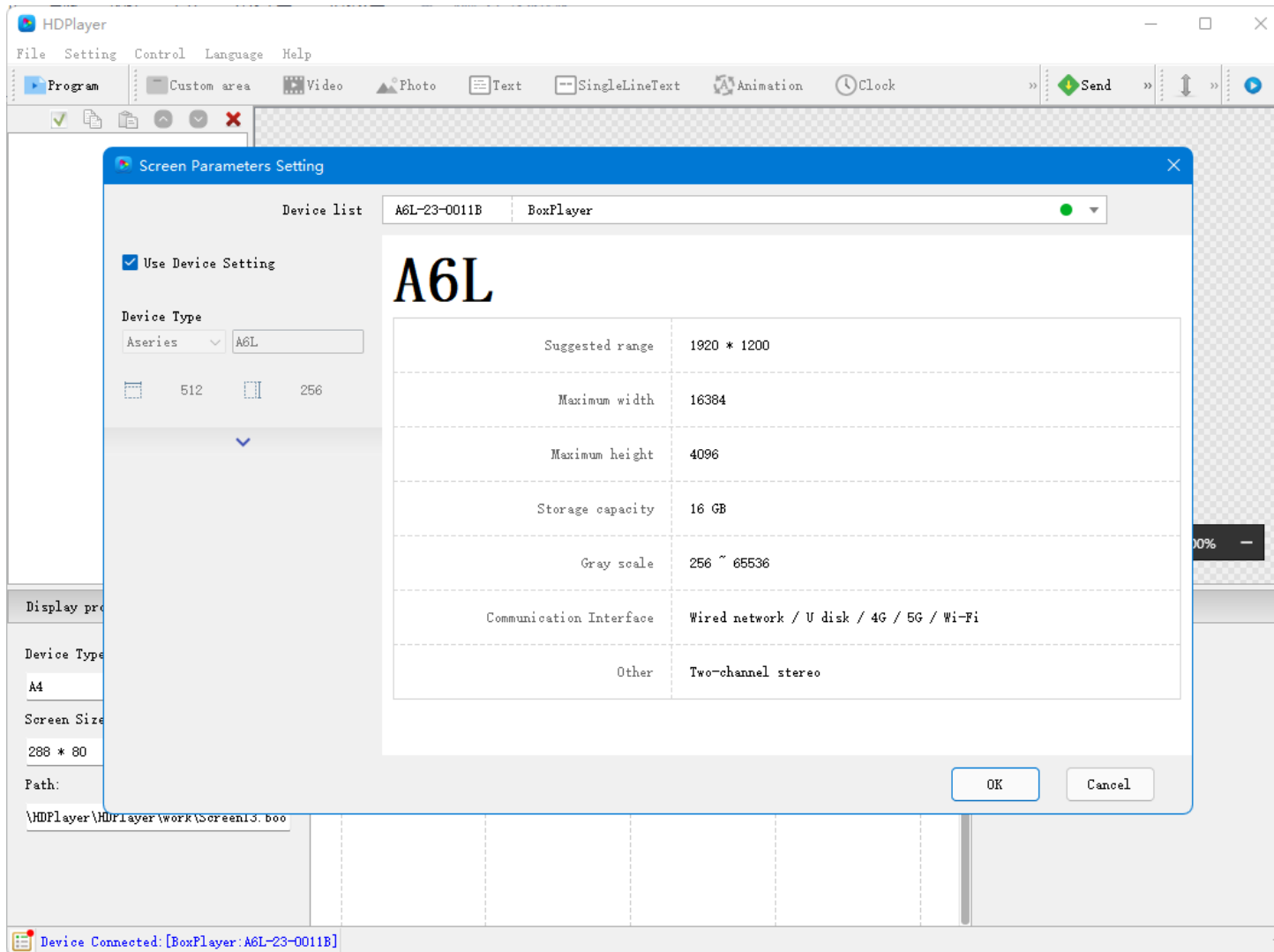
Connect the A6L to the computer by CAT5/6 cable or WiFi(Default password:88888888).



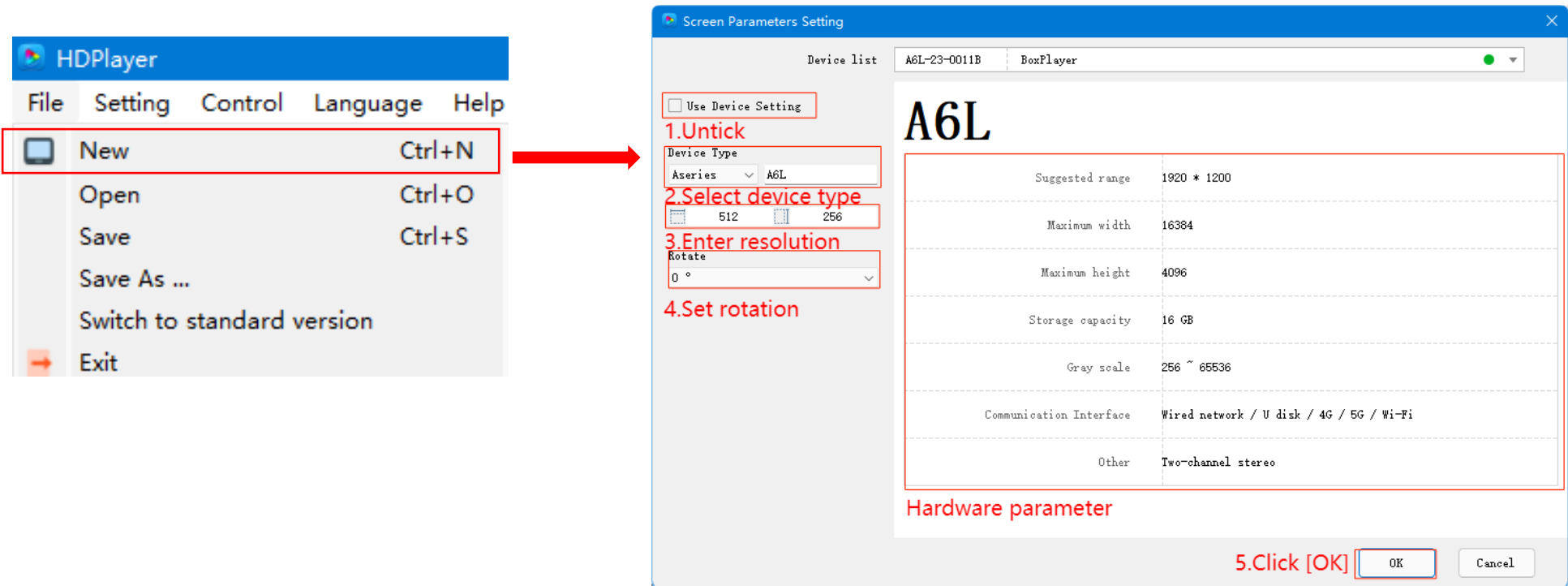
3.2 Basic Setting

3.2.1 Create new screen for A6L

1.Run the HDPlayer software then it shows the A6L connected.



2.You need to create a new screen,then set the screen parameters.Click [OK] after you finish the setting.



HDPlayer

File Setting Control Language Help

New Ctrl+N

Open Ctrl+O

Save Ctrl+S

Save As ...

Switch to standard version

Exit

Screen Parameters Setting

Device list A6L-23-0011B BoxPlayer

Use Device Setting

1.Untick

Device Type

Aseries A6L

2.Select device type

512 256

3.Enter resolution

Rotate

0°

4.Set rotation

A6L

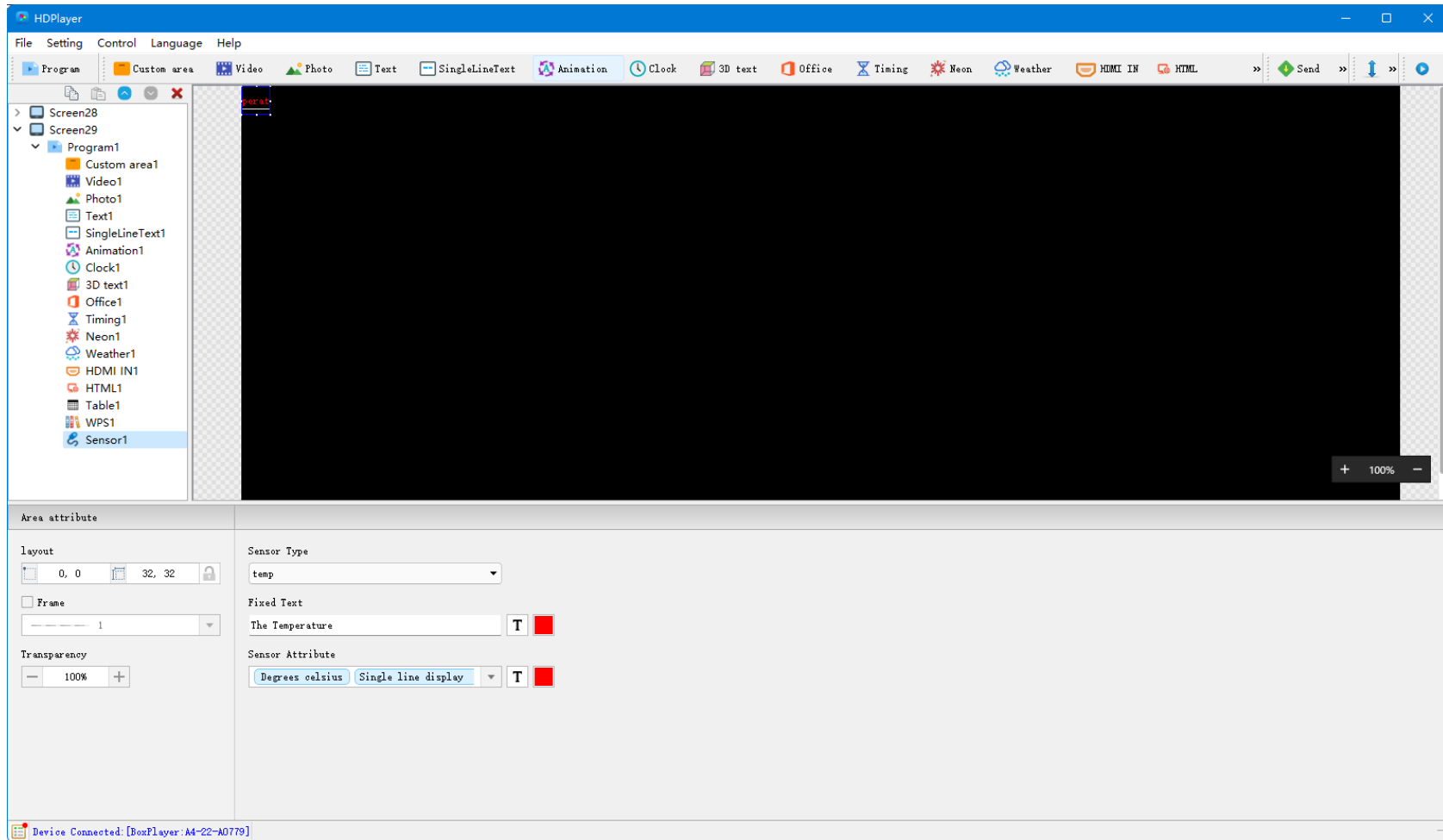
Suggested range	1920 * 1200
Maximum width	16384
Maximum height	4096
Storage capacity	16 GB
Gray scale	256 ~ 65536
Communication Interface	Wired network / U disk / 4G / 5G / Wi-Fi
Other	Two-channel stereo

Hardware parameter

5.Click [OK]

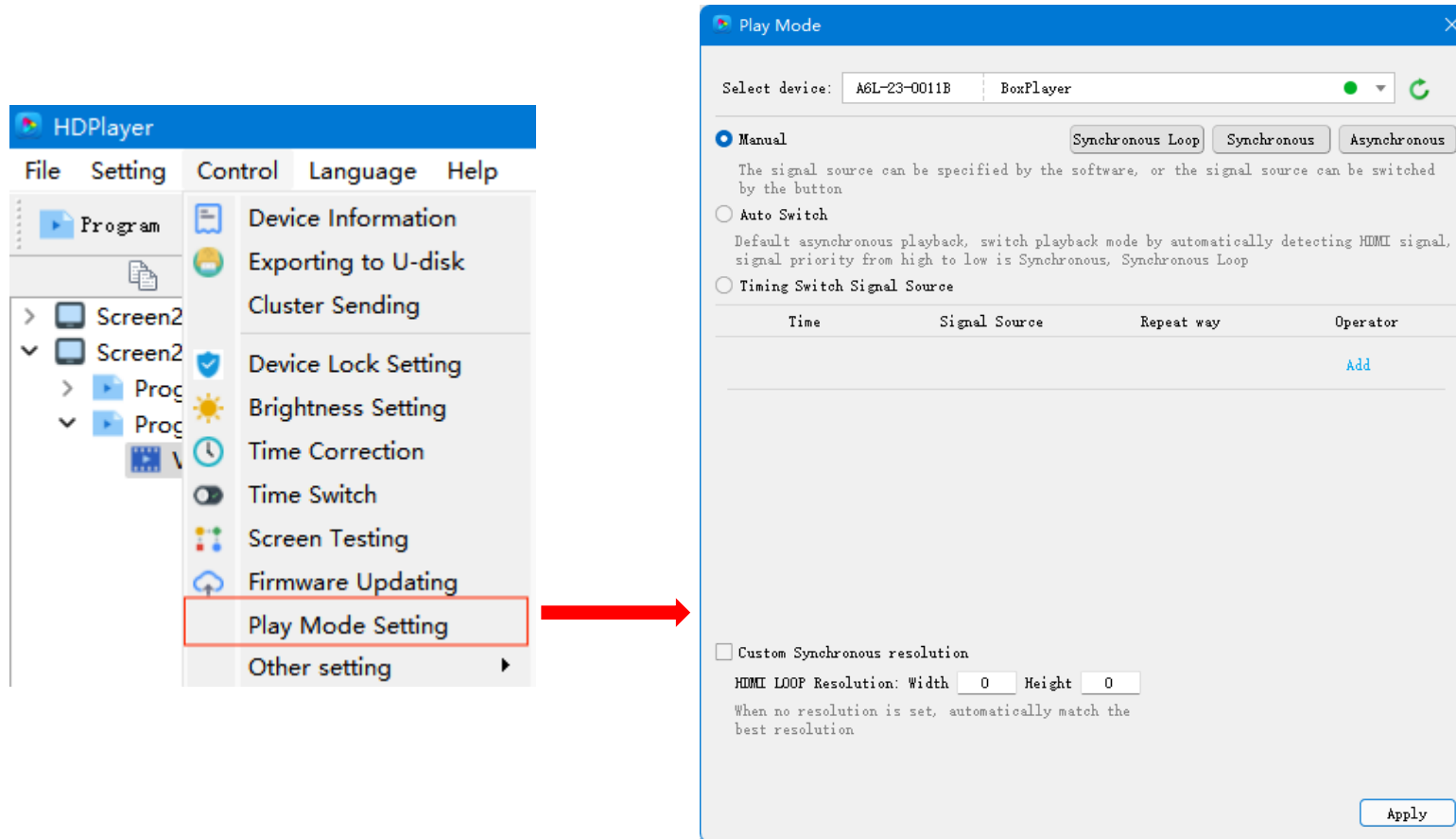
OK Cancel

3. After the previous steps, you can begin to edit the program.



3.2.2 Play mode setting

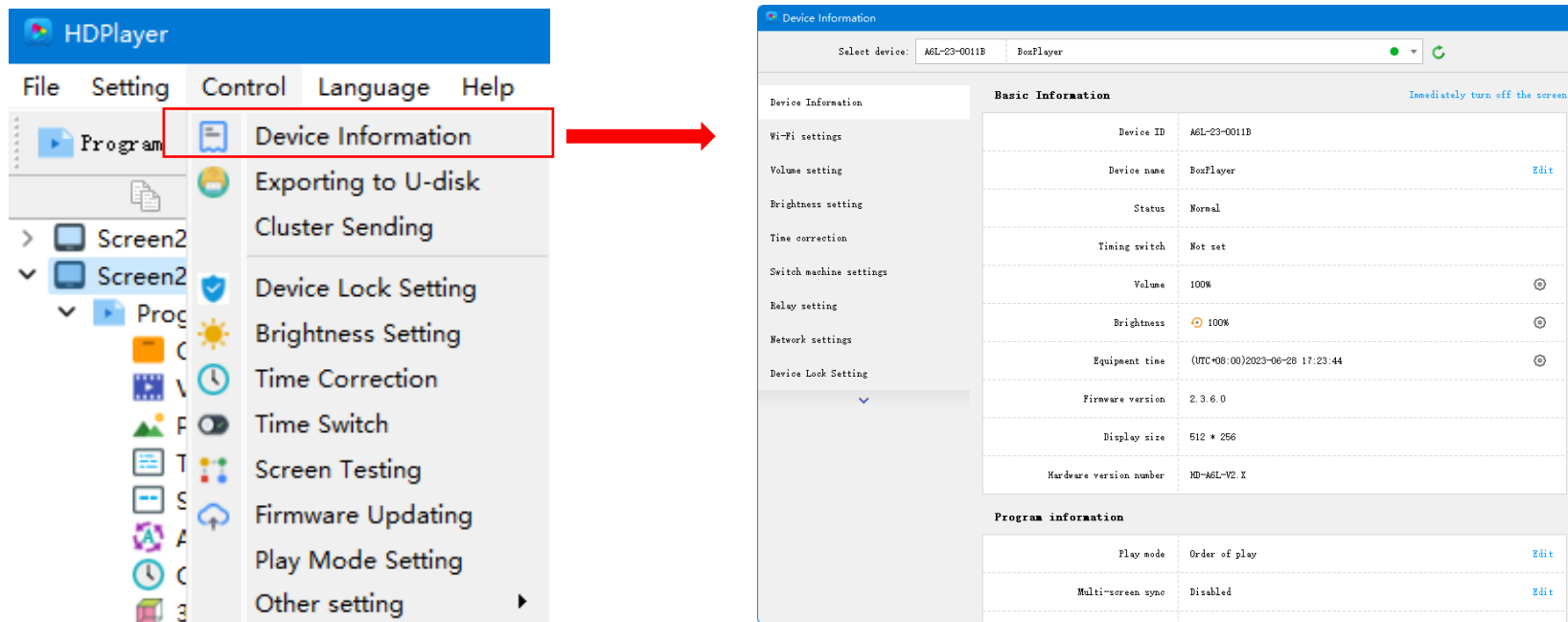
A6L is dual-mode display player. You can set play mode you want.



3.3 More setting

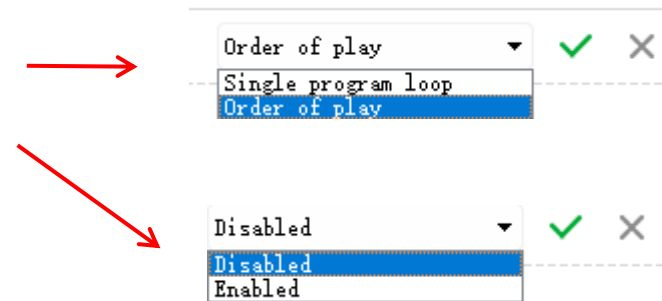
3.3.1 Device information

You can view the running status of the device in the device information.

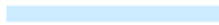


Play mode: Support single program loop and order of play.

Multi-screen Sync: Default setting is disable.If you want multiple screens to play synchronously, please enable.



Program information

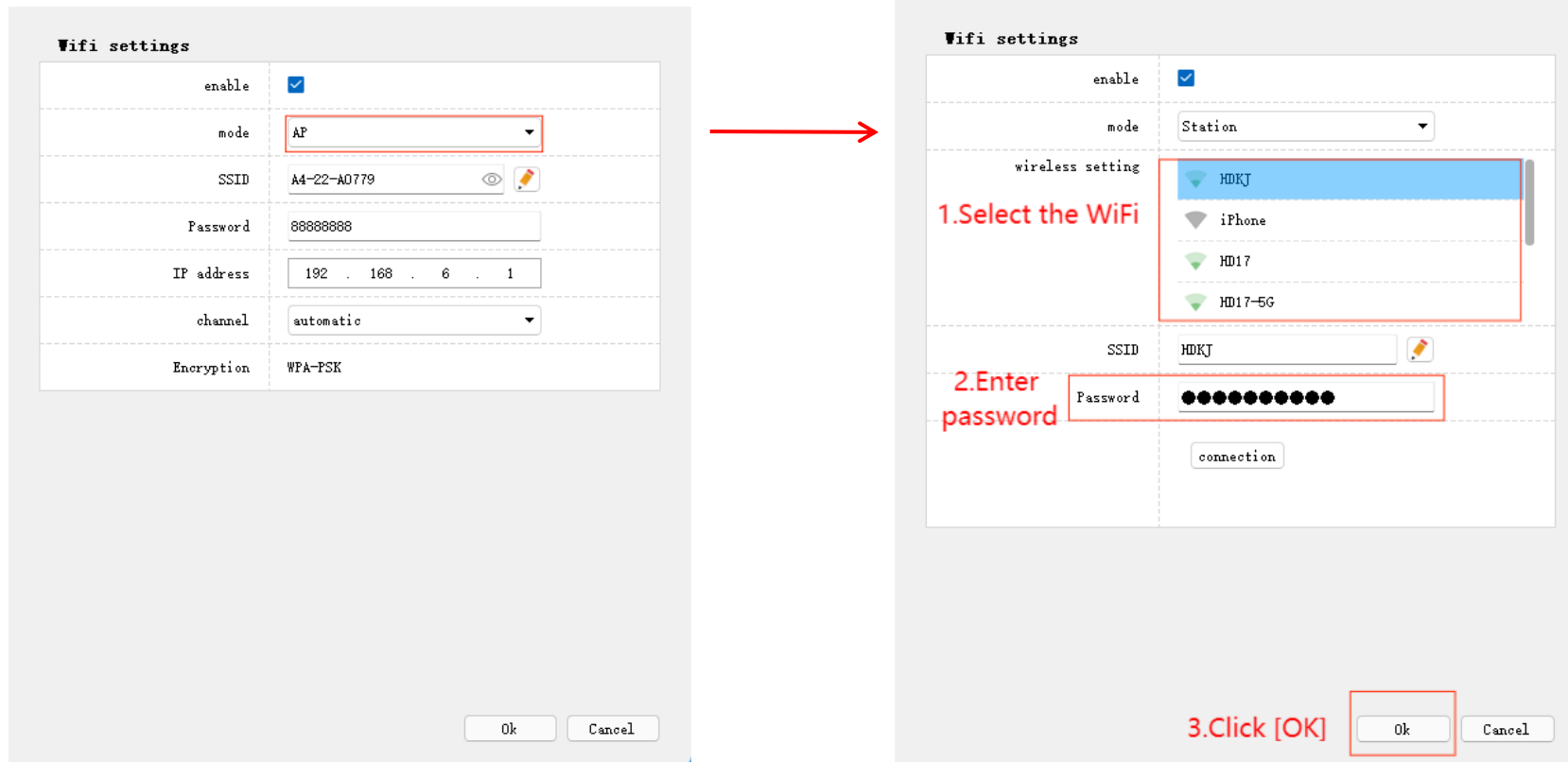
Play mode	Order of play	Edit
Multi-screen sync	Disabled	Edit
Total number of programs	1	
Currently play the show	1	
Capacity information	 4.3 GB / 4.3 GB	

View the 3/4G network and sensor status.

3.3.2 WiFi setting

Edit WiFi switch, mode, name and password, etc.

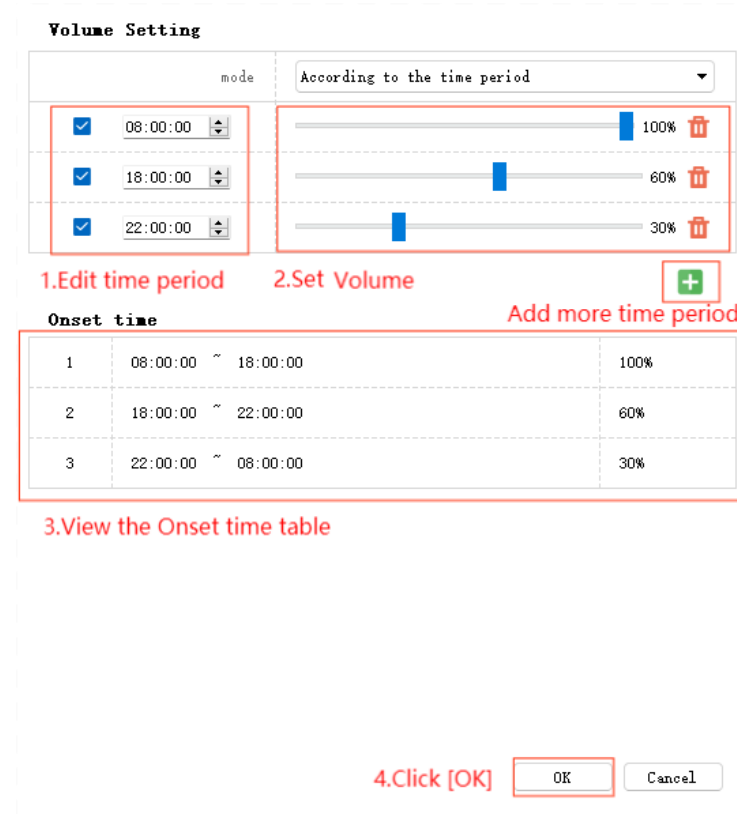
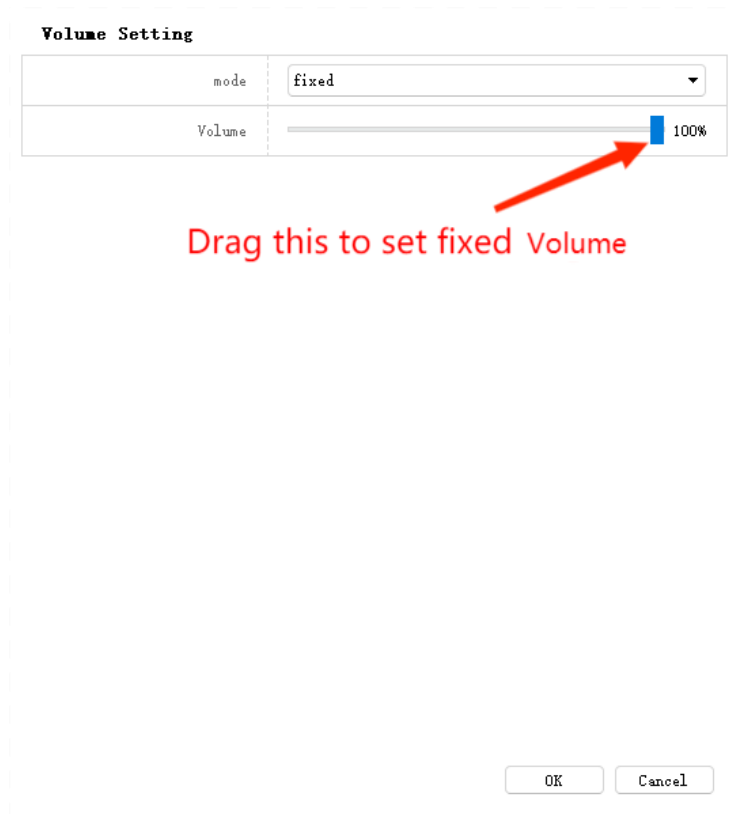
Station mode enable A6L connect to the wireless network.



3.3.3 Volume setting

Fixed mode: set fixed volume

According to the time period: Set the time frame.



3.3.4 Brightness setting

Default mode: Set fixed brightness

Custom mode: Set the time frame for brightness

Automatic mode: A6L automatically change Brightness according to the sensor.

Sensitivity Indicates the frequency of detection.[High] means every 5 seconds;[in] mean 10;[low] mean 15.

You'd better set Brightness monitoring interval to 3400-7000.

Brightness setting

Select mode mode Default mode

Brightness 100%

Brightness monitoring interval 3400 18000

Drag this to set fixed brightness

Ok Cancel

Brightness setting

mode Custom mode

Brightness monitoring interval 3400 18000

1.Edit time period

2.Set brightness

3400 18000

100% 60% 30%

+

Add more time period

Onset time

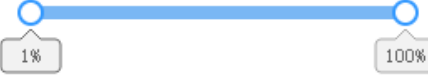

1	08:00:00 ~ 18:00:00	100%
2	18:00:00 ~ 22:00:00	60%
3	22:00:00 ~ 08:00:00	30%

3.View the onset time table

4.Click [OK]

Ok Cancel

Brightness setting

mode	Automatic mode
Sensitivity	high
Brightness range	
Brightness monitoring interval	

1. Select [high]

2. Set range you want

3. The best value is 3400-7000

4. Click [OK]

Ok	Cancel
----	--------

3.3.5 Time correction

Set the system time zone. A6L support summer time.

Automatic synchronization: NTP mean time correct by network. Set GPS if installed the GPS module. Set RF if installed the RF device.

time setting

System time zone	(UTC+08:00)Beijing, Chongqing, HongKong, Urunchi
summer time	<input type="checkbox"/>
Automatic synchronization	NTP ntp.huidu.cn
<input type="checkbox"/> Time correction	2022-12-12 14:14:40
Calibration mode	Synchronize the computer
	2022/12/12 14:14:40 ⓘ

Automatic synchronization

Automatic synchronization	NTP ntp.huidu.cn
<input type="checkbox"/> Time correction	2022-12-12 14:31:20
Calibration mode	ter

Time correction options:

- Disabled
- NTP**
- GPS (RS232)
- GPS (USB)
- GPS (PCIE)
- RF
- Auto.

Ok Cancel

3.3.6 Switch machines setting

Set on/off time for A6L.

Enable the timer switch 1.Tick here to enable

	boot time	Off time
<input checked="" type="checkbox"/>	09:00:00	18:00:00
<input type="checkbox"/>	00:00:00	00:00:00
<input type="checkbox"/>	00:00:00	00:00:00
<input type="checkbox"/>	00:00:00	00:00:00



2.Set the boot and off time

3.Tick here to make it effective

4.Click [OK]

3.3.7 Relay setting

A6L supports relay installation.

	Relay name	Switch setting	
--	------------	----------------	--

Open Close OK Cancel

3.3.8 Network setting

Default is automatic acquisition. You can set fixed IP for A6L.

Network settings

Automatic acquisition	<input checked="" type="checkbox"/> Enabled	Untick to edit fixed IP
MAC	50 : 22 : d1 : a0 : 77 : 90	
IP address	192 . 168 . 110 . 21	
Subnet mask	255 . 255 . 255 . 0	
Default gateway	192 . 168 . 110 . 1	
DNS	255 . 255 . 255 . 255 ⓘ	



Network settings

Automatic acquisition	<input type="checkbox"/> Enabled	
MAC	50 : 22 : d1 : a0 : 77 : 90	
IP address	192 . 168 . 1 . 20	
Subnet mask	255 . 255 . 255 . 0	
Default gateway	192 . 168 . 1 . 1	
DNS	255 . 255 . 255 . 255 ⓘ	

1.Edit the fixed IP you want

Ok Cancel

2.Click [OK] Cancel

3.3.9 Device lock setting

Set password to lock the device. After that People without passwords will not be able to make operational changes to the device.

Device Lock

Enabled	<input type="checkbox"/>	1.Tick
New password	<input type="password"/>	2.Set password
Confirm password	<input type="password"/>	

Note: Please save your password properly.

3.Click [OK]

3.3.10 Wireless Display

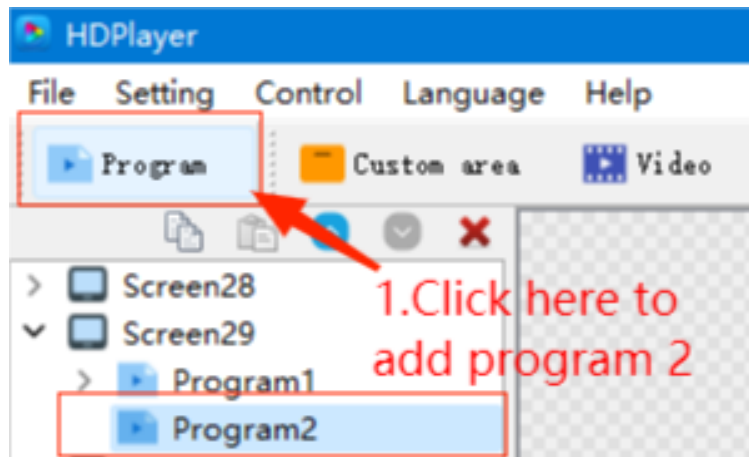
A6L support DLAN, Miracast and AirPlay projection mode.

DLAN (Video player software projection screen)	<input type="checkbox"/>
Miracast (Android, Windows 10/11 screen mirroring)	<input type="checkbox"/>
AirPlay (iPhone, iPad screen projection)	<input type="checkbox"/>

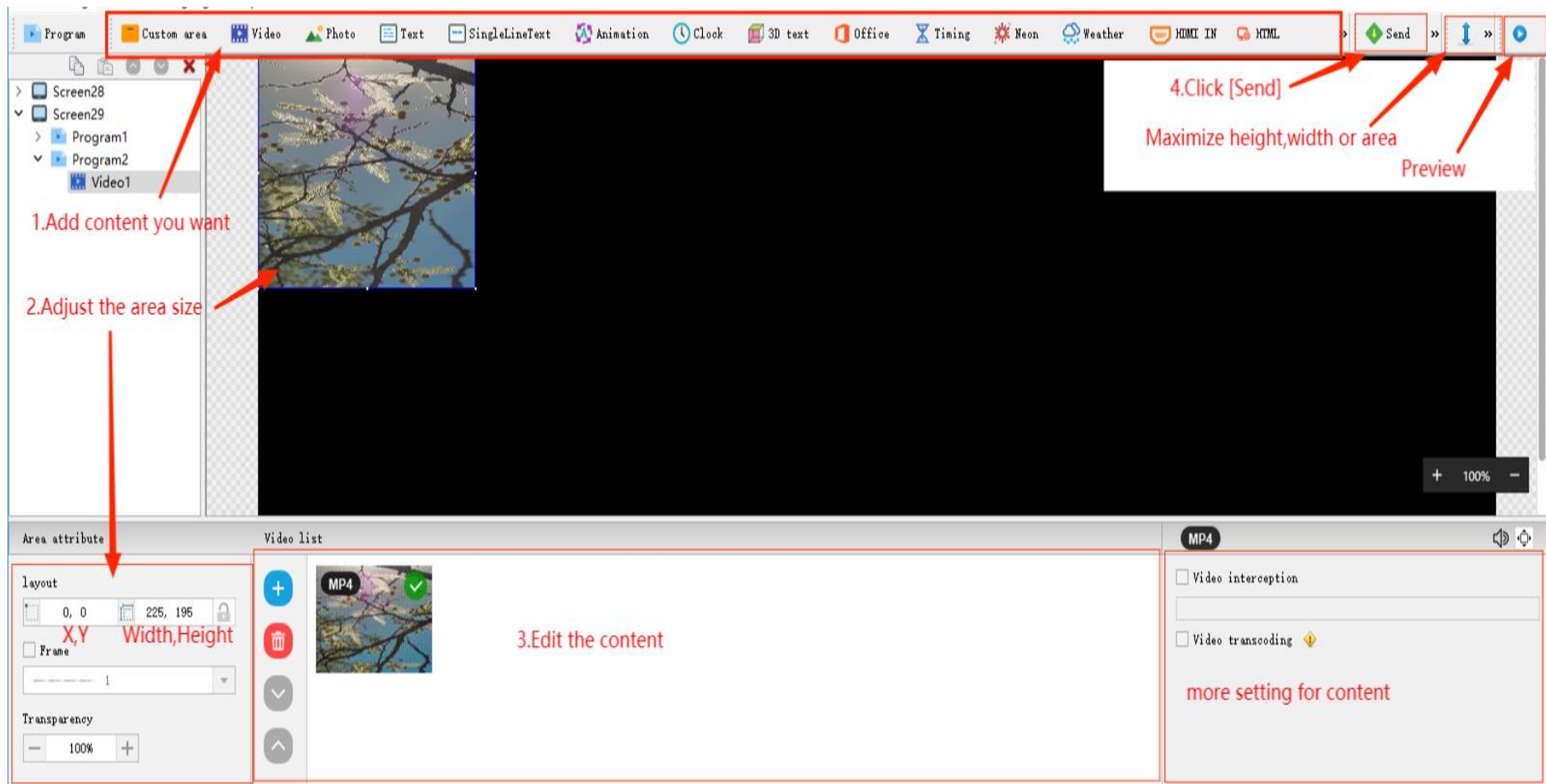
Chaper 4 Async Program Editing and Publishing

4.1 Publish programs by HDPlayer

1. Create new program



2. Add content into Program



3. Sending interface

Send Project

Screen	<input checked="" type="checkbox"/>	Device ID	Device name	Progress	Status
Screen28	<input checked="" type="checkbox"/>				
Screen29	<input checked="" type="checkbox"/>	A4-22-A0779	BoxPlayer	<div style="width: 100%;"><div style="width: 100%; background-color: blue; height: 10px;"></div>100% 156.6 KB</div>	✓

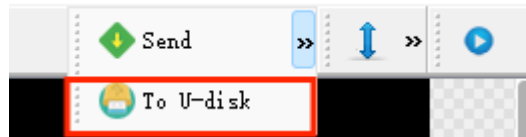
Check status:
✓ mean success

Send Cancel

4.2 Publish programs by U-disk(FAT or FAT 32)

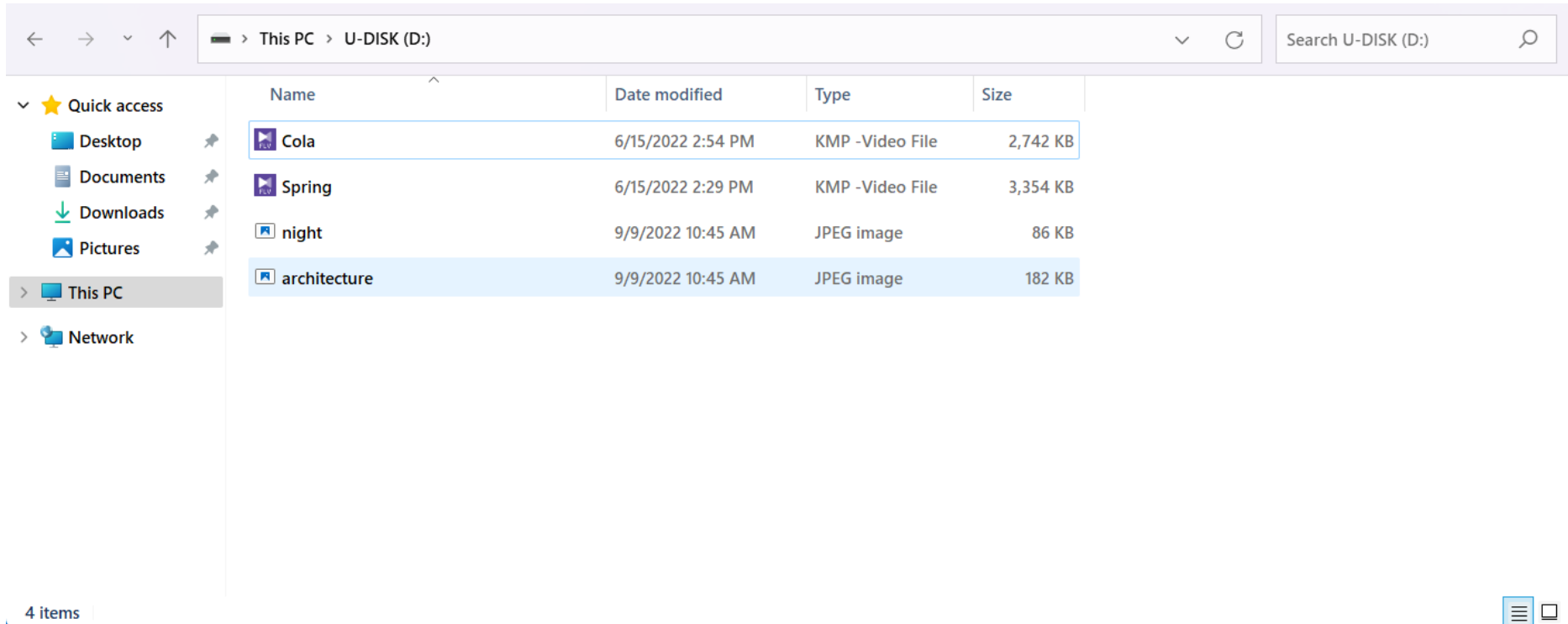


1. Export the program to the U-disk in HDPlayer



2. Publish the video and picture in the U-disk

Put the video and picture in the root catalog of U-disk



The screenshot shows a Windows File Explorer window with the address bar set to "This PC > U-DISK (D:)". The left sidebar shows "Quick access" with Desktop, Documents, Downloads, and Pictures, and "This PC" selected. The main area displays a table of files:

Name	Date modified	Type	Size
Cola	6/15/2022 2:54 PM	KMP -Video File	2,742 KB
Spring	6/15/2022 2:29 PM	KMP -Video File	3,354 KB
night	9/9/2022 10:45 AM	JPEG image	86 KB
architecture	9/9/2022 10:45 AM	JPEG image	182 KB

At the bottom left, it says "4 items". At the bottom right, there are icons for view and search.